

premium knob™

MEDIUM DUTY

STRATEGIC



INDOOR/OUTDOOR WIPER/SCRAPER

Premium Knob™ is a heavy duty needlepunch matting that can be installed indoors as well as outdoors. Permanently anti-static, has enhanced UV stability and is mold and mildew resistant. Holds approximately 5.5 litres or 1.45 gallons of water per square yard. CRI GLP Certified.

PERFECT FOR

VESTIBULES
LOBBIES
HEAVY TRAFFIC ENTRANCES

roll sizes

3'3" x 69' (1.0 m x 21.0 m),
6'6" x 69' (2.0 m x 21.0 m),
13' x 69' (4.0 m x 21.0 m)

individual sizes

3'3" x 6', 15'
(1.0 m x 1.8 m, 4.6 m),
6'6" x 6', 15'
(2.0 m x 1.8 m, 4.6 m),
13' x 15'
(4.0 m x 4.6 m)

Other sizes available

face style

Berber (hobnail)

edging

Available

total weight

2.16 kg/sq. m
(0.44 lb/sq. ft)

thickness

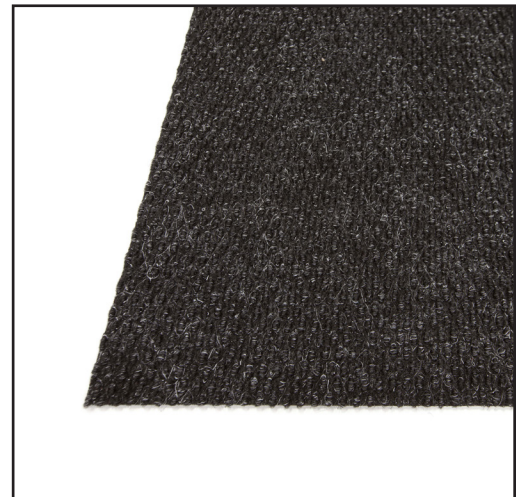
3/8 in. (9.5 mm)

colour(s)

7 available

warranty

3 year



edgewood
matting

edmonton
vancouver
toronto
edgewoodgroup.ca

December 16, 2021

CALL FOR DETAILS OR TO REQUEST A SAMPLE

1.800.668.1776

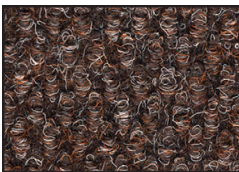
P 780.466.2084 • F 780.468.9104
E inquiries@edgewoodgroup.ca



premium knob™

face material	Polypropylene
face construction	Needlepunch loop pile
backing	Rubber
flammability	Passes C.G.S.B. Standards for Flammability (Pill Test) Meets Flammability Standard DOC-FF-1-70 (Pill Test)
recycled content	5%

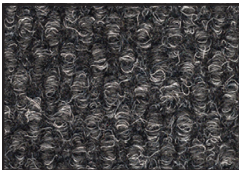
SWATCHES



#10 CHOCOLATE



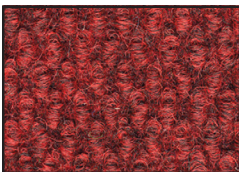
#15 BEIGE



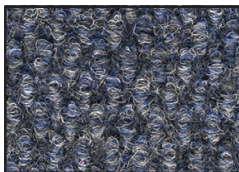
#20 CHARCOAL



#25 GREY



#30 RED



#40 BLUE



#50 GREEN



edmonton
vancouver
toronto
edgewoodgroup.ca

December 16, 2021

CALL FOR DETAILS OR TO REQUEST A SAMPLE

1.800.668.1776

P 780.466.2084 • F 780.468.9104
E inquiries@edgewoodgroup.ca